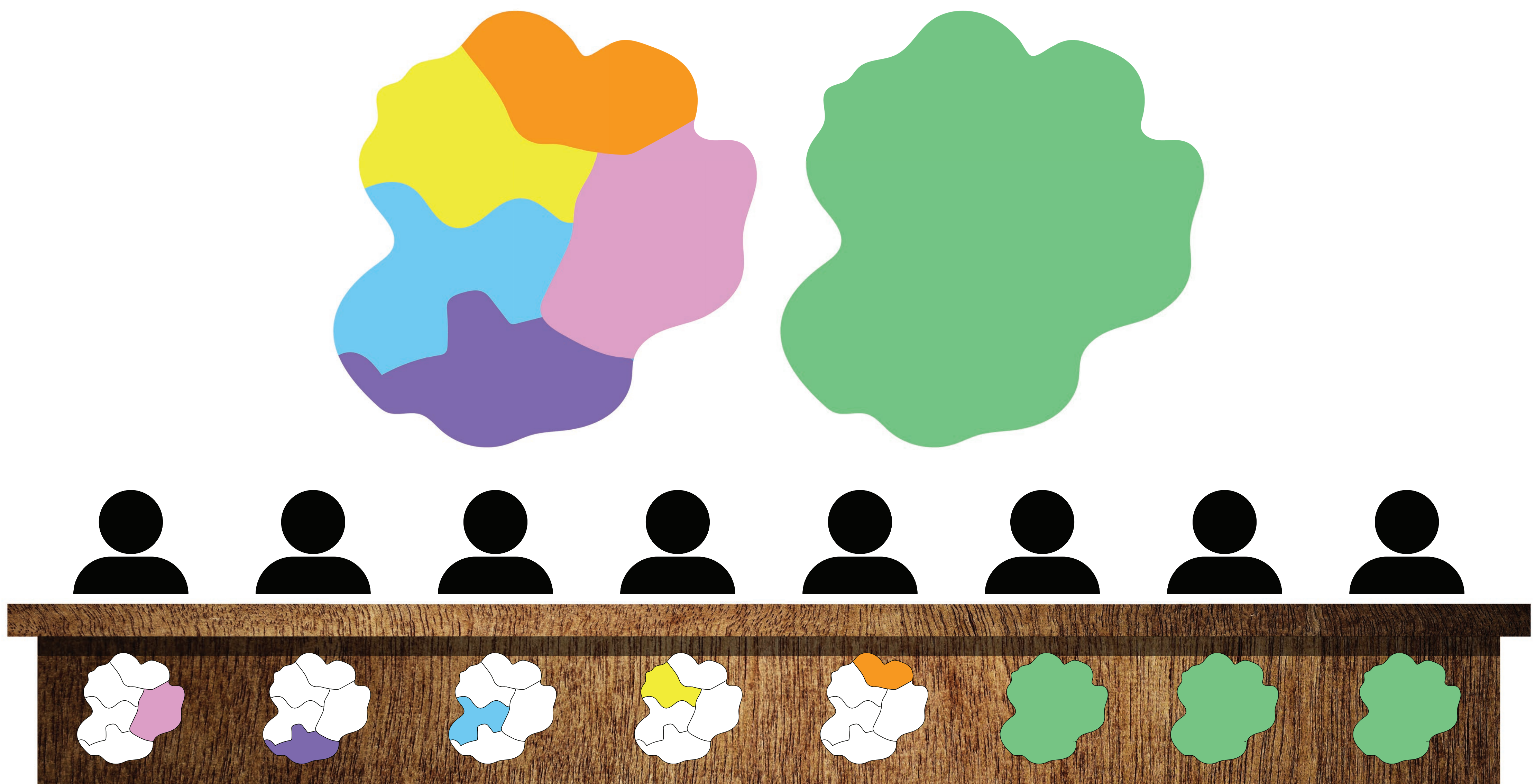


COUNCILS WITH AT-LARGE SEATS



Some cities, including Greensboro and Durham, elect some council members by district and some at large.

THINGS TO CONSIDER WITH THIS SYSTEM:

- If some council members are elected by district and some at large, the council will have some measure of geographical diversity.
- The number of districts will determine the extent of the geographic diversity on the council.
- The council will have some members representing all city voters, which may make them more inclined to focus on how issues affect the city as a whole.
- The council will have some members whose focus may be on their constituents and their ward.
- Every voter is represented on the City Council by a specific council member.
- Having fewer districts could make it hard for minority groups to elect the candidate of their choice so that they have representation on the city council.
- The shape of the districts could influence the ability of minority groups to elect the candidate of their choice so that they have representation on the city council.
- At-large elections encourage more people to run for office because they are not tied to a particular district.
- Voters can feel that they have more say over who sits on the City Council because they cast ballots for all the at-large seats as well as a council member to represent their district.