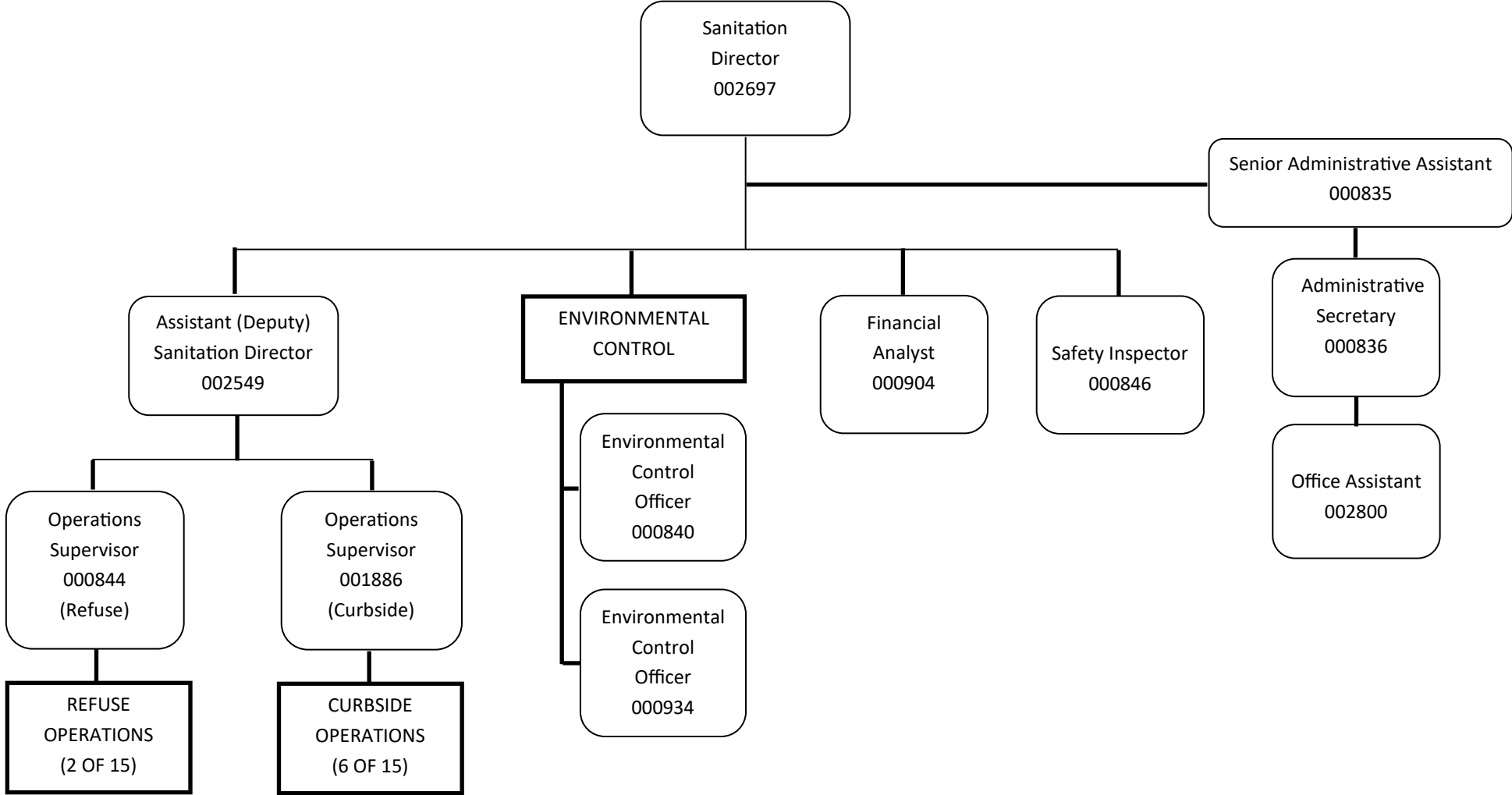


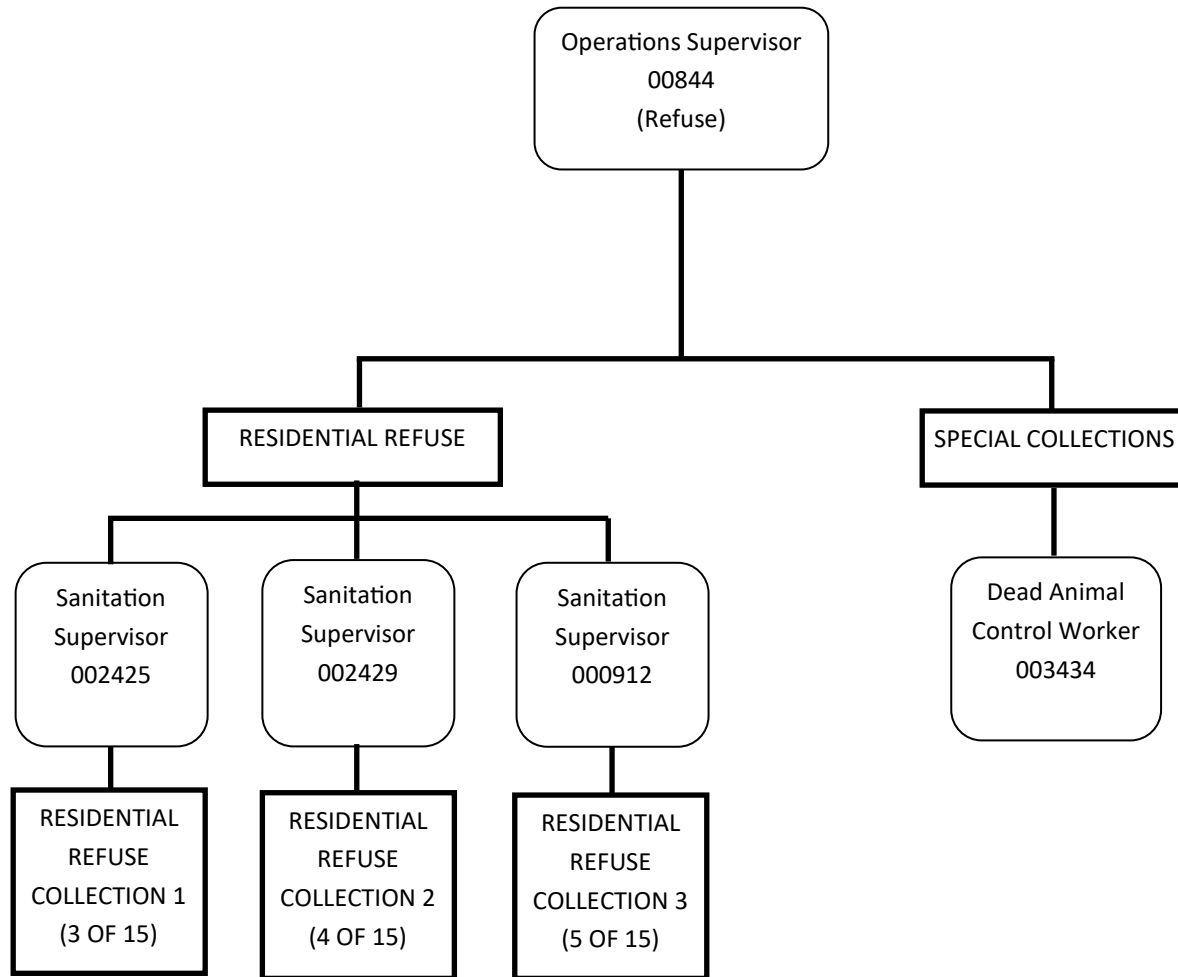
SANITATION (1 OF 15) -ADMINISTRATION



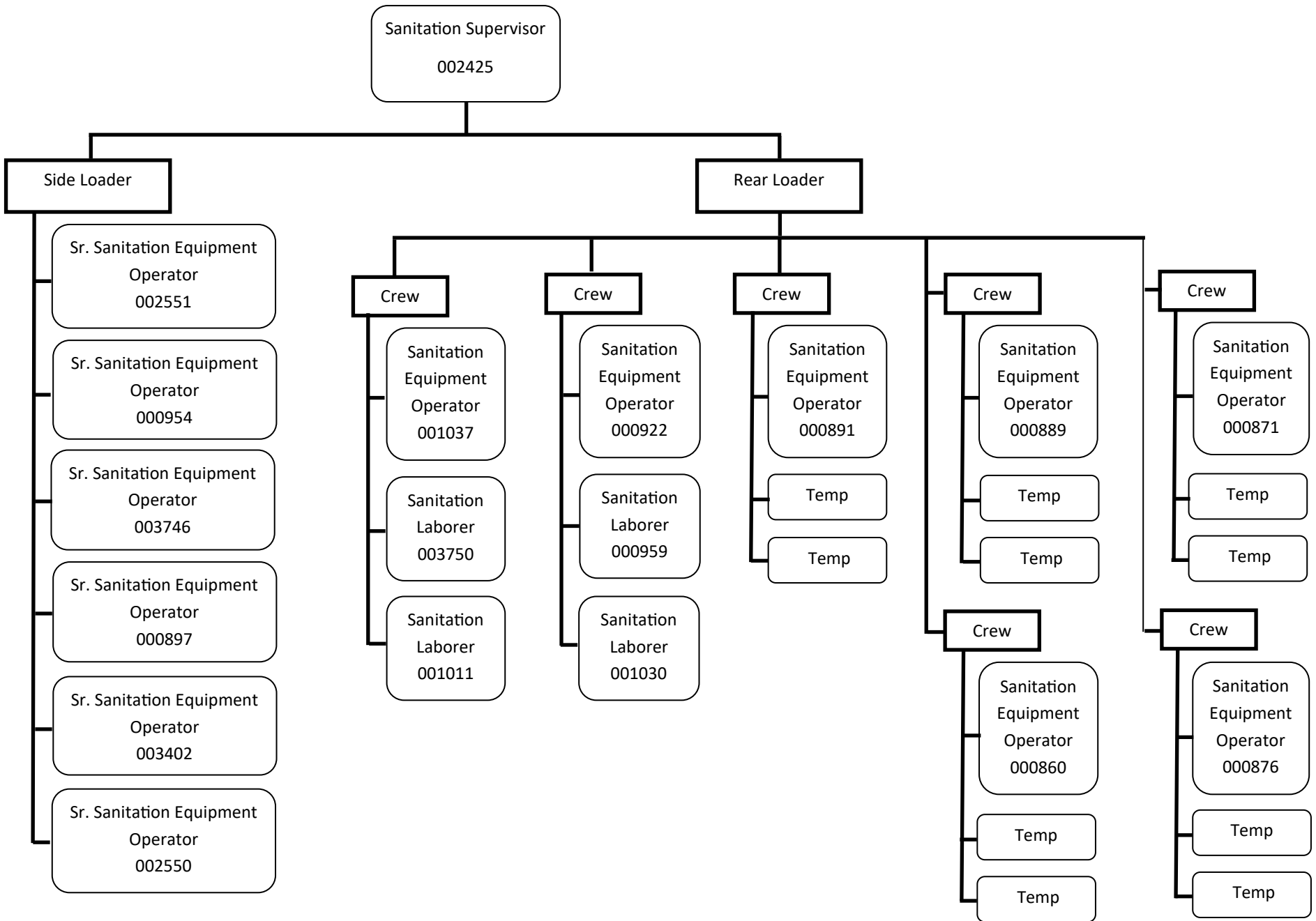
KEY

(Temp) This status is for workers supplied by a temporary agency for work performed on a short term basis.

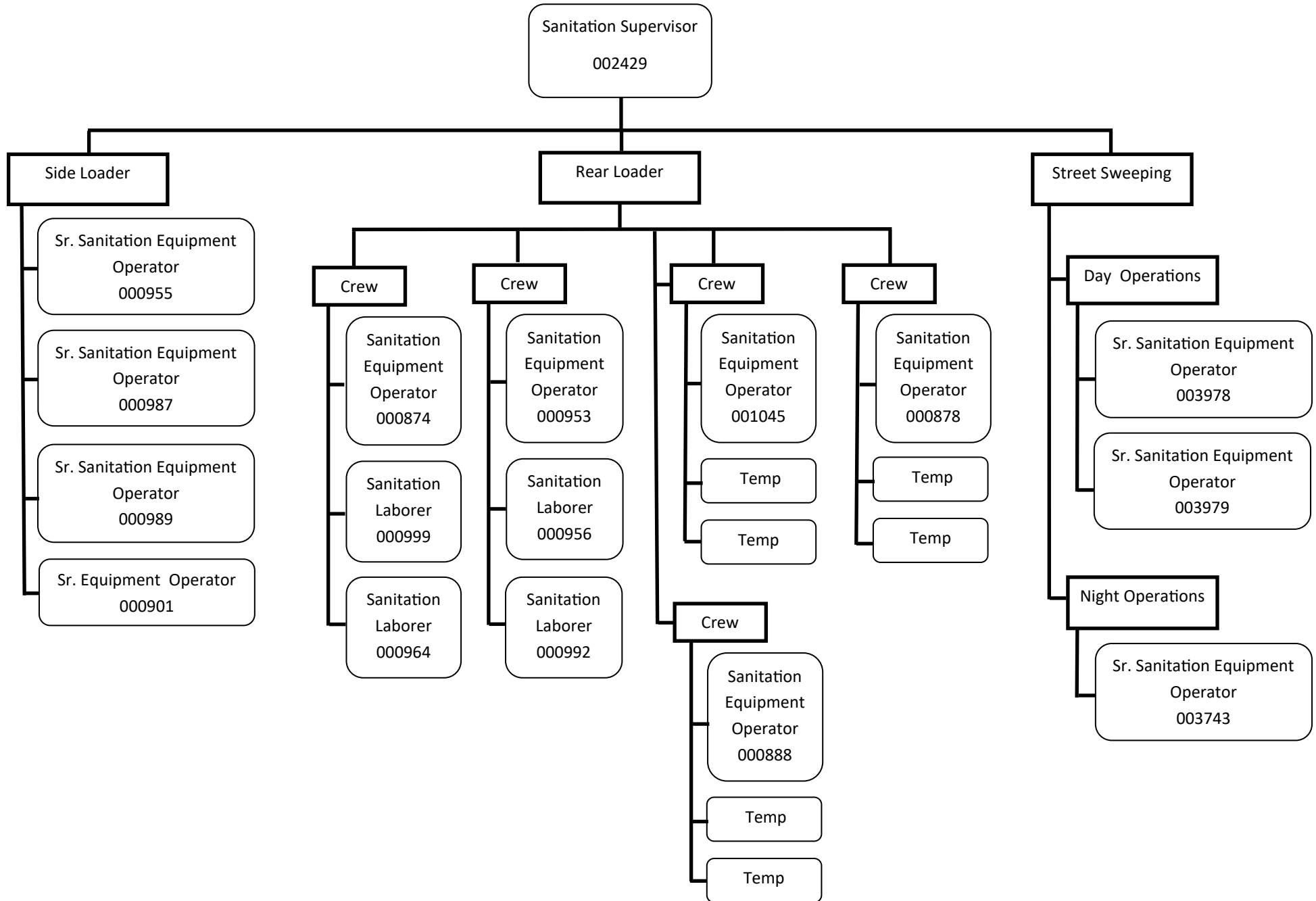
SANITATION OPERATIONS (2 of 15) - REFUSE OPERATIONS



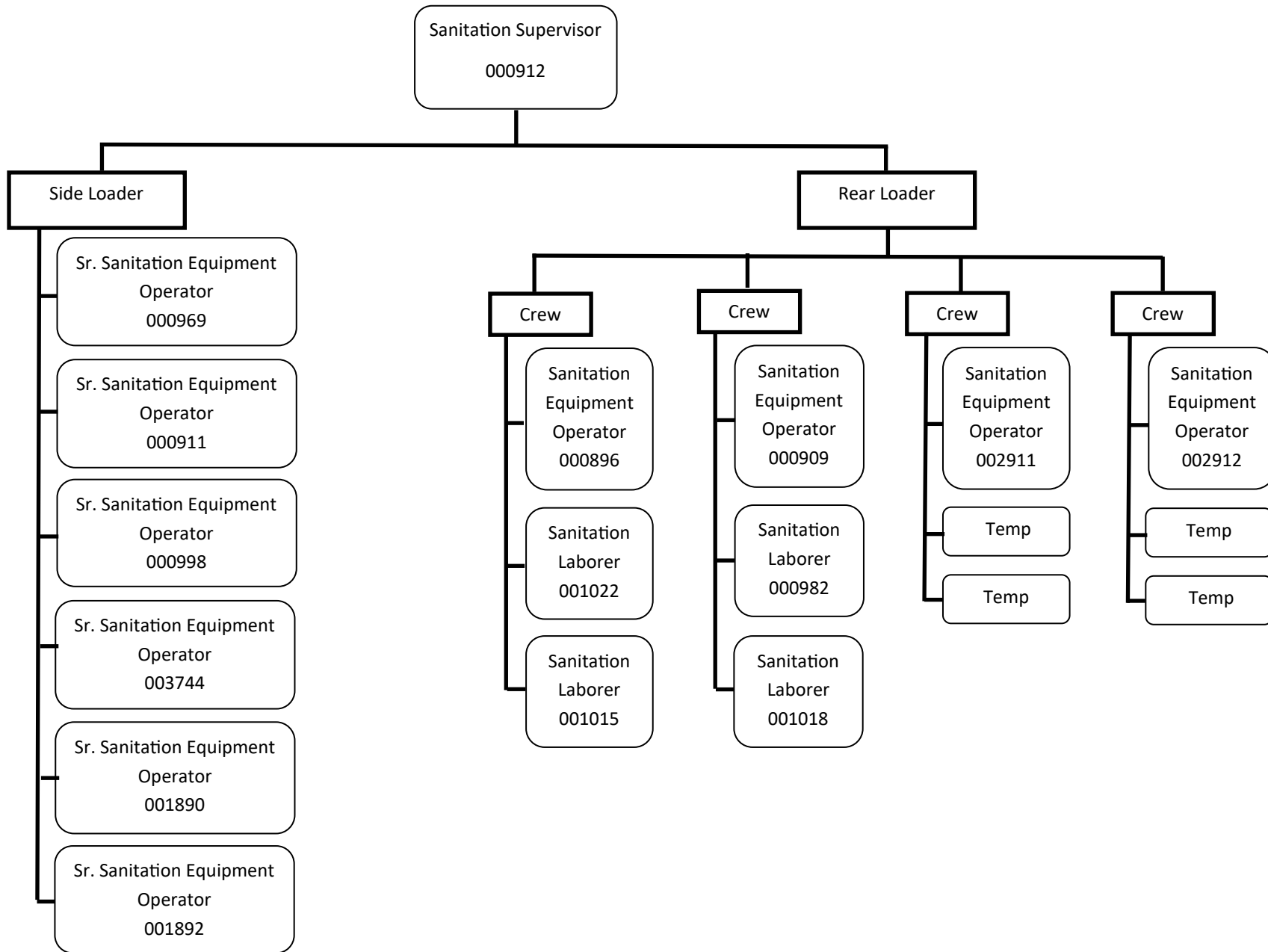
SANITATION (3 OF 16)—RESIDENTIAL REFUSE COLLECTION I



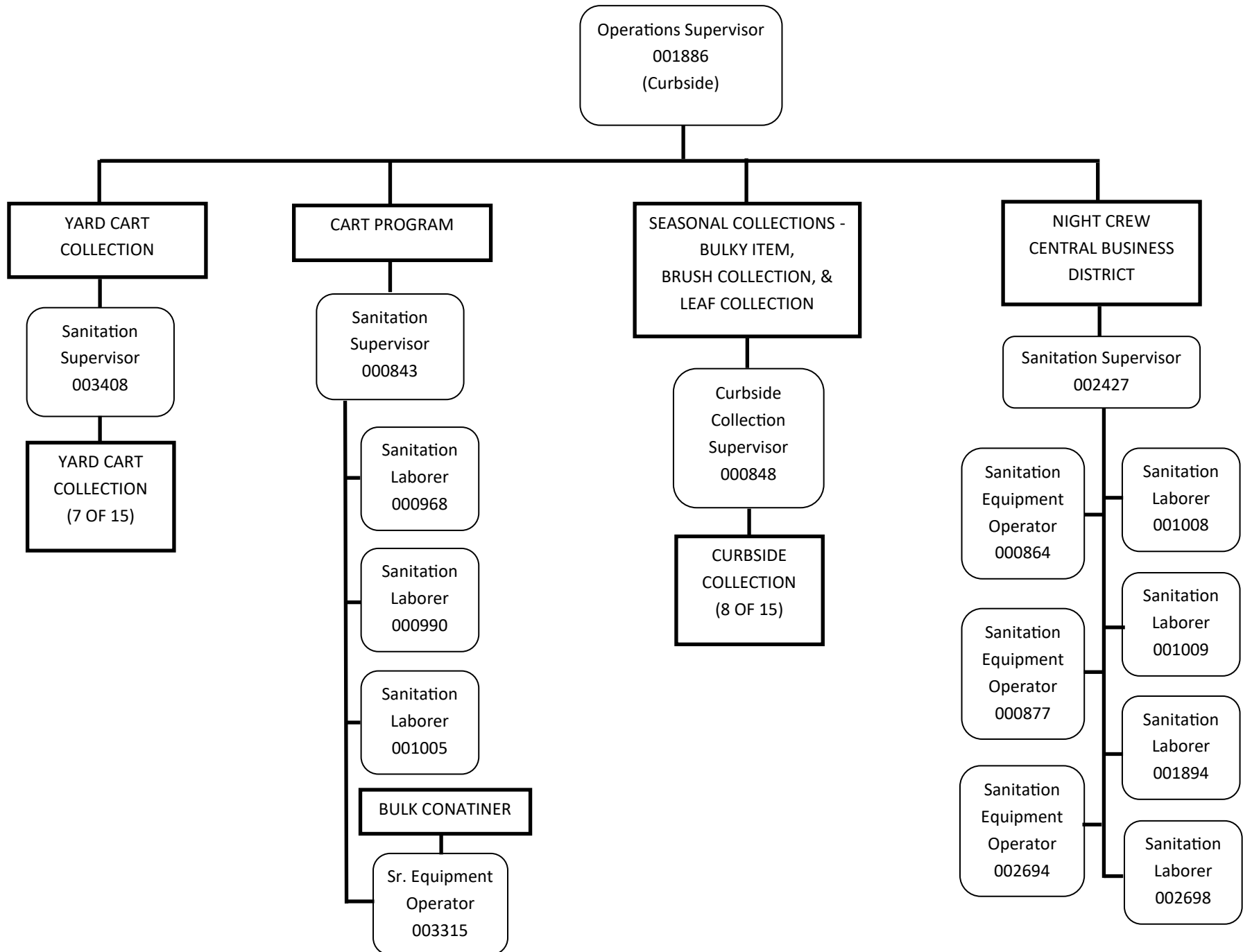
SANITATION (4 OF 15) - RESIDENTIAL REFUSE COLLECTION 2



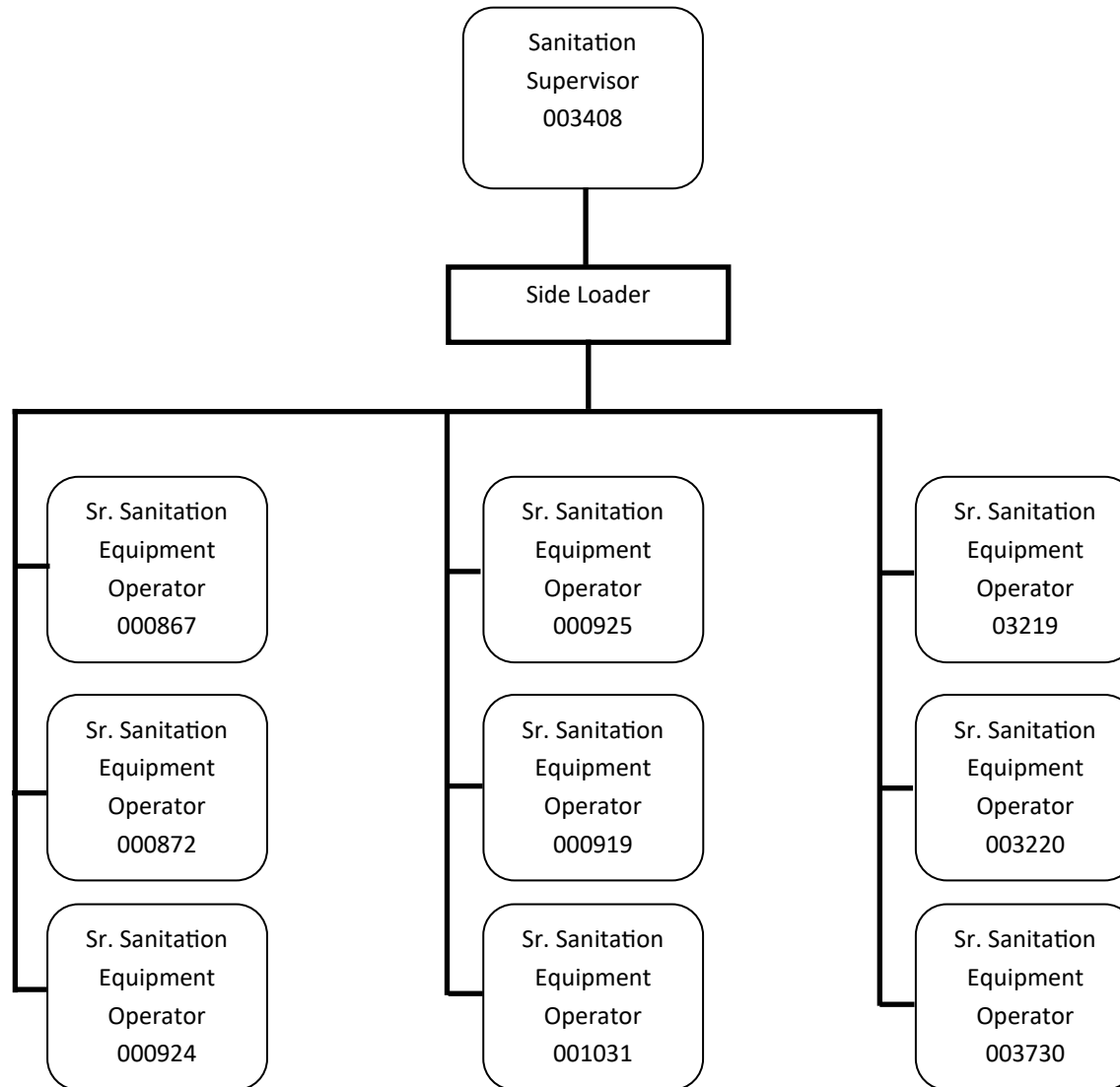
SANITATION (5 OF 15) RESIDENTIAL REFUSE COLLECTION 3



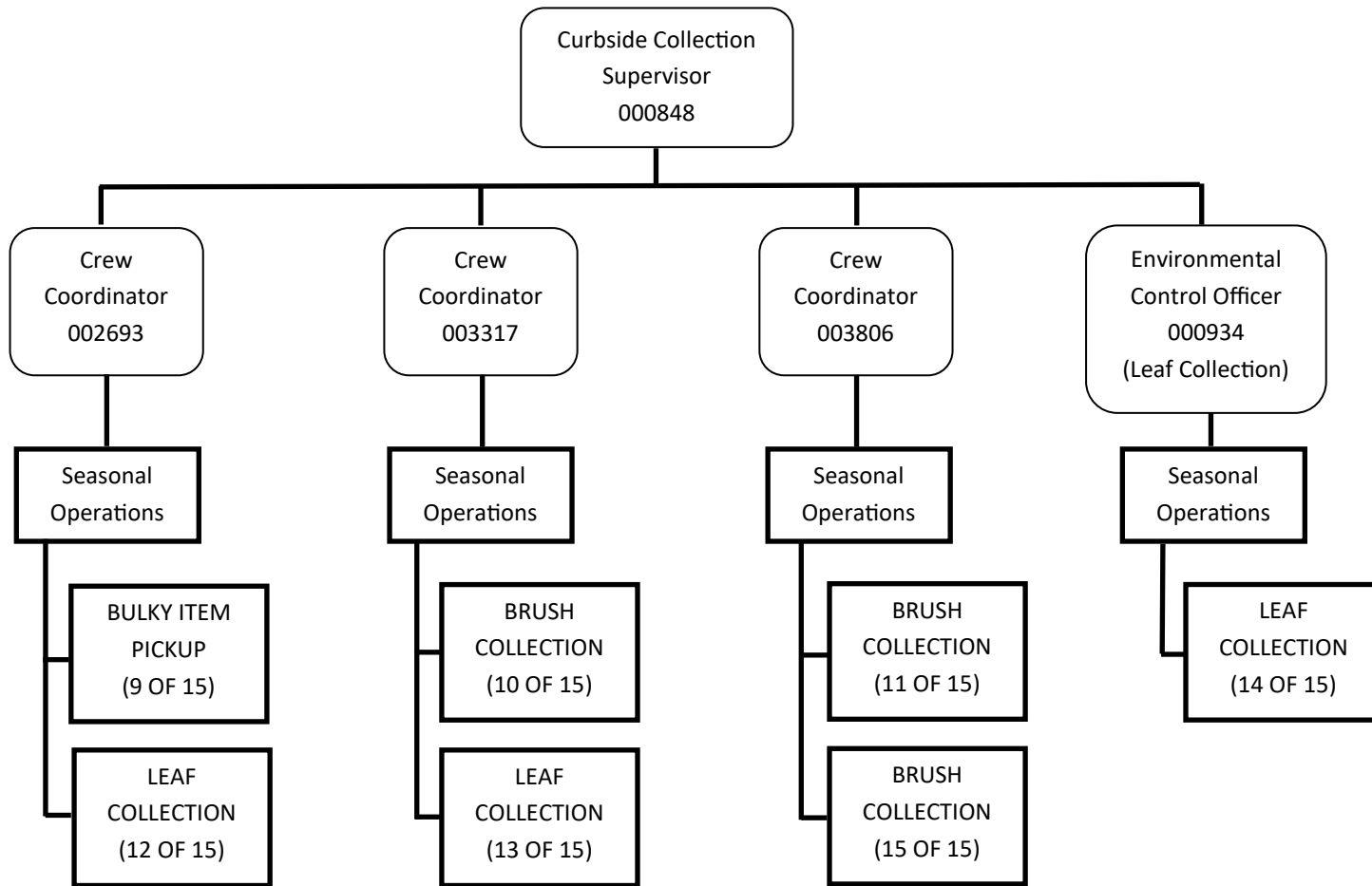
SANITATION (6 OF 15) - CURBSIDE OPERATIONS



SANITATION (7 OF 15) - CURBSIDE—YARD CART COLLECTION



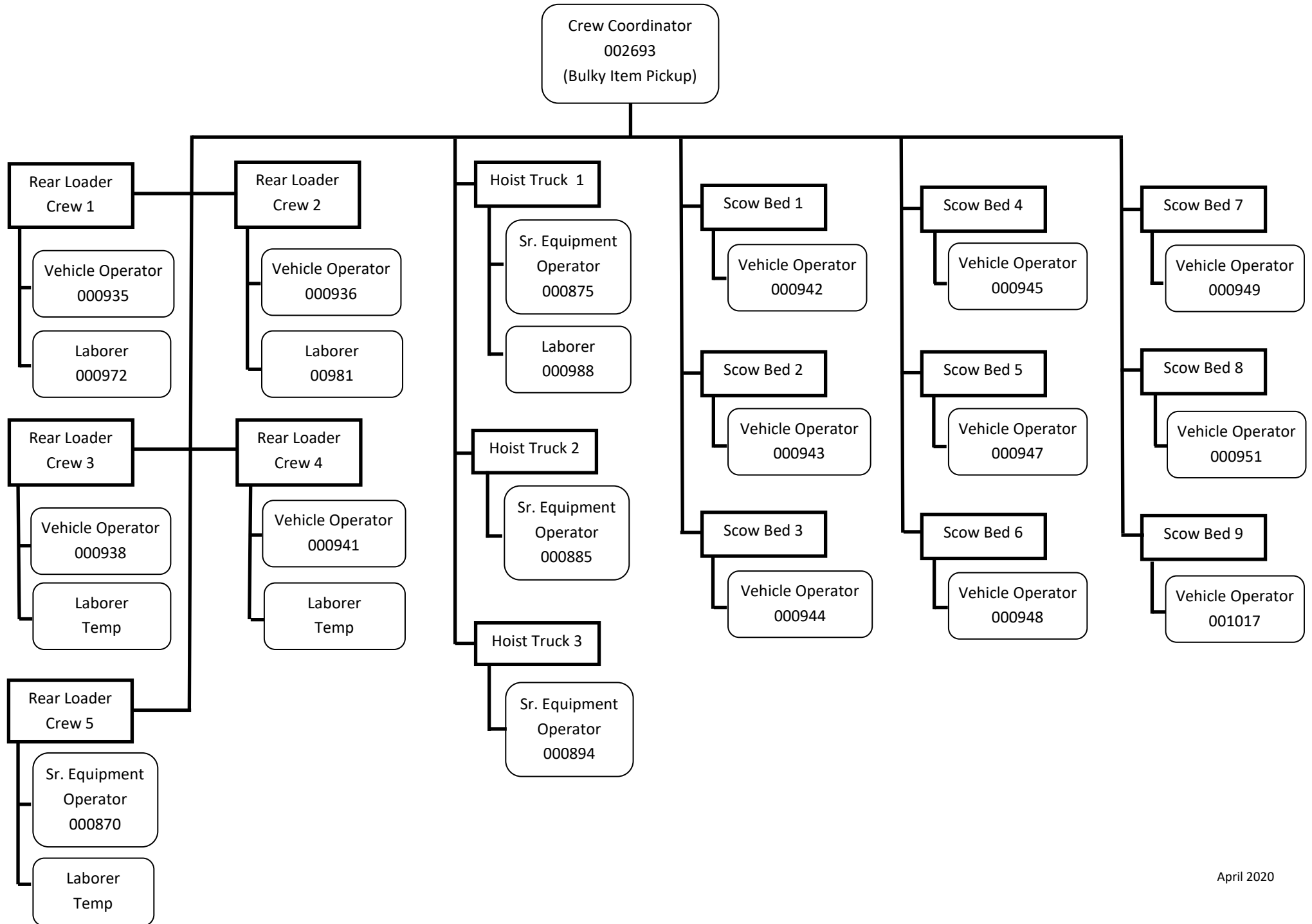
SANITATION (8 OF 15) - CURBSIDE COLLECTION



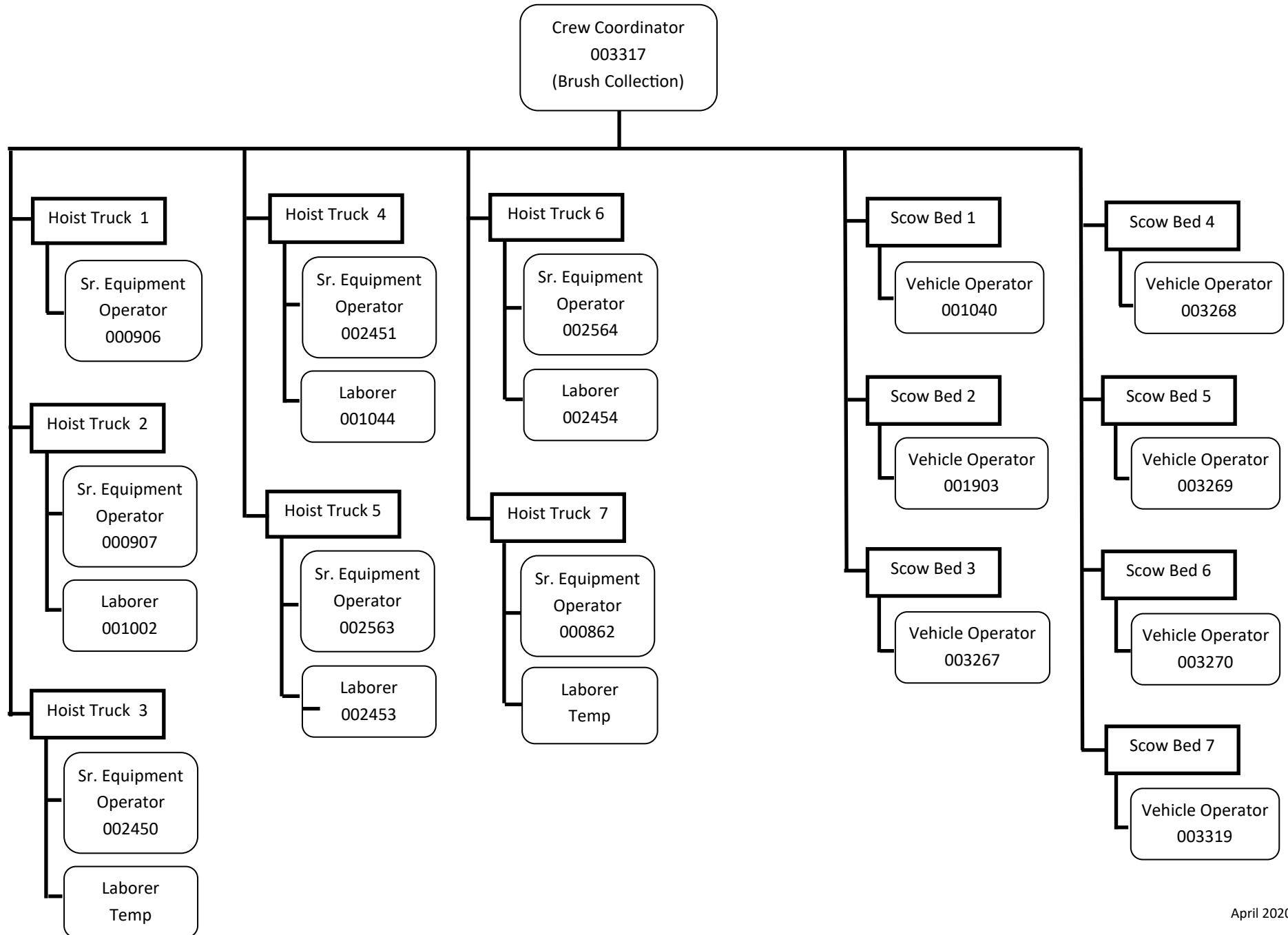
The Curbside Collection program operates in a seasonal capacity (Bulky Item Pick-up or Leaf Collection) for approximately 11 out of 12 months of the year. Organization charts on pages 10-12 of 16 reflect crew staffing during Bulky Item Pick-up season. Organizational charts of pages 13-16 of 16 reflect crew staffing during Leaf Collection season. In the approximately one month that the Curbside Collection program is not in Bulky Item or Leaf Collection season, positions are realigned into Brush Collection crews.

SANITATION - BULKY ITEM COLLECTION

SANITATION (9 OF 15) SEASONAL OPERATIONS - BULKY ITEM SEASON

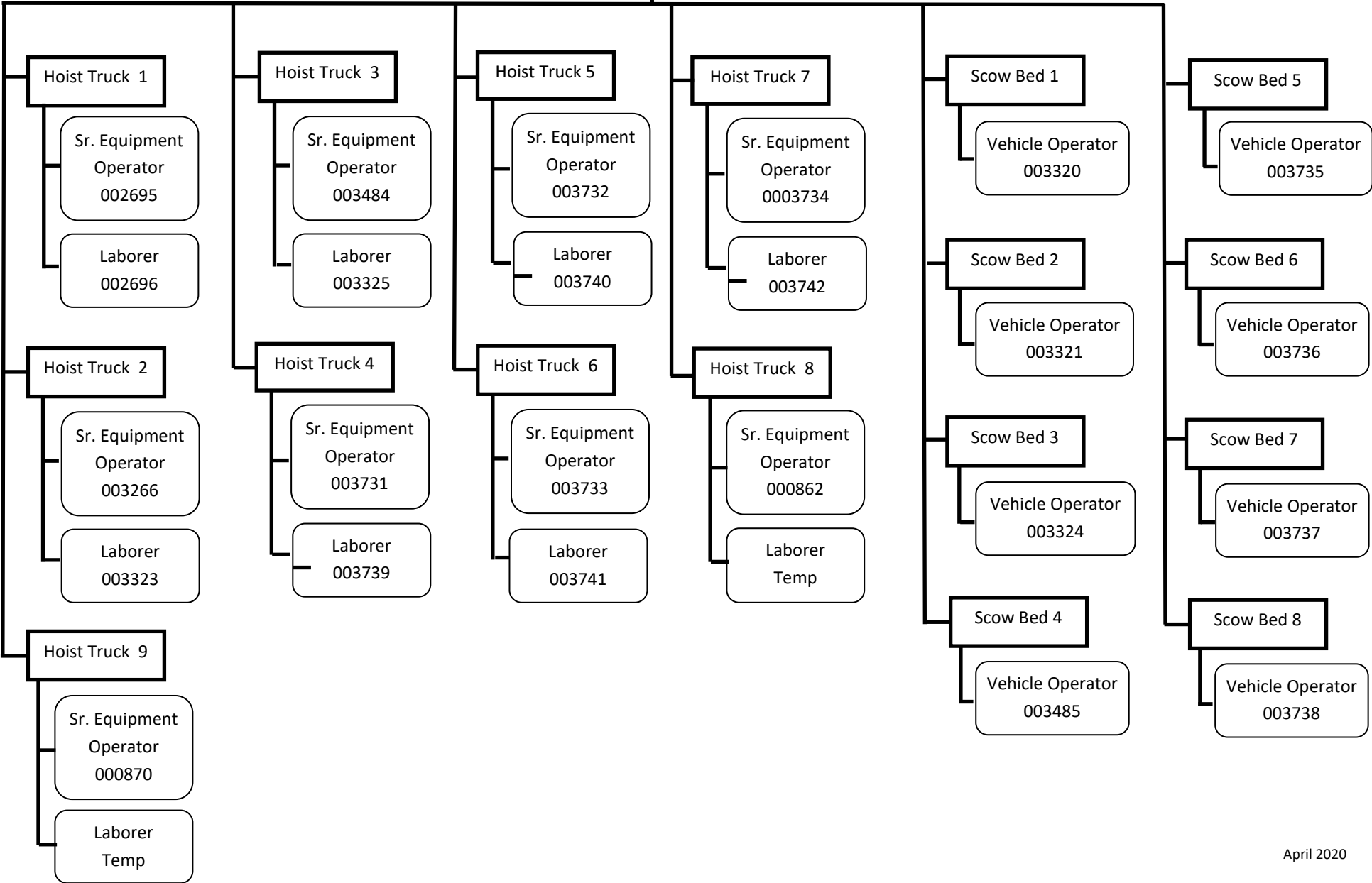


SANITATION (10 OF 15) - SEASONAL OPERATIONS—BULKY ITEM SEASON



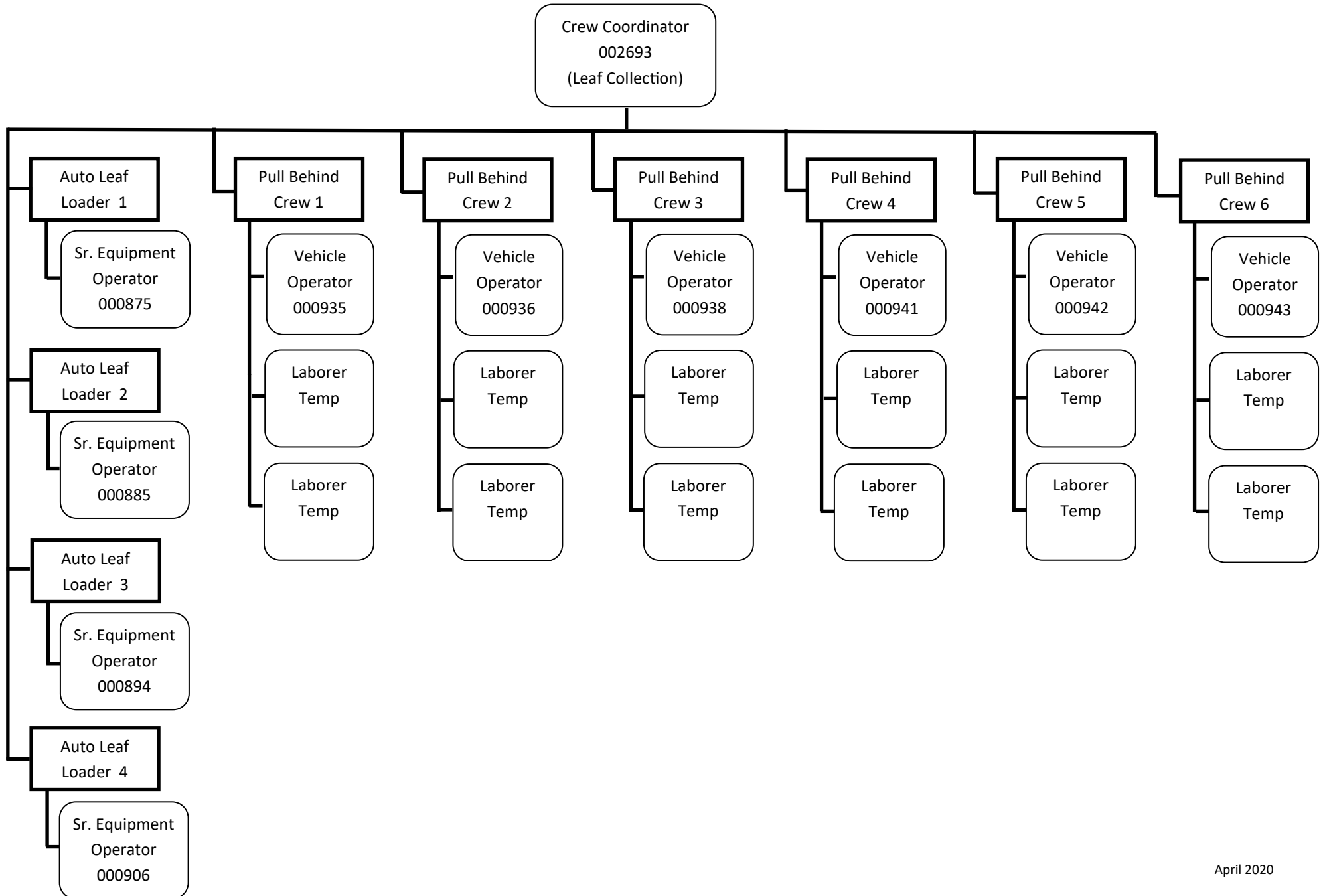
SANITATION (11 OF 15) - SEASONAL OPERATIONS—BULKY ITEM SEASON

Crew Coordinator
003806
(Brush Collection)

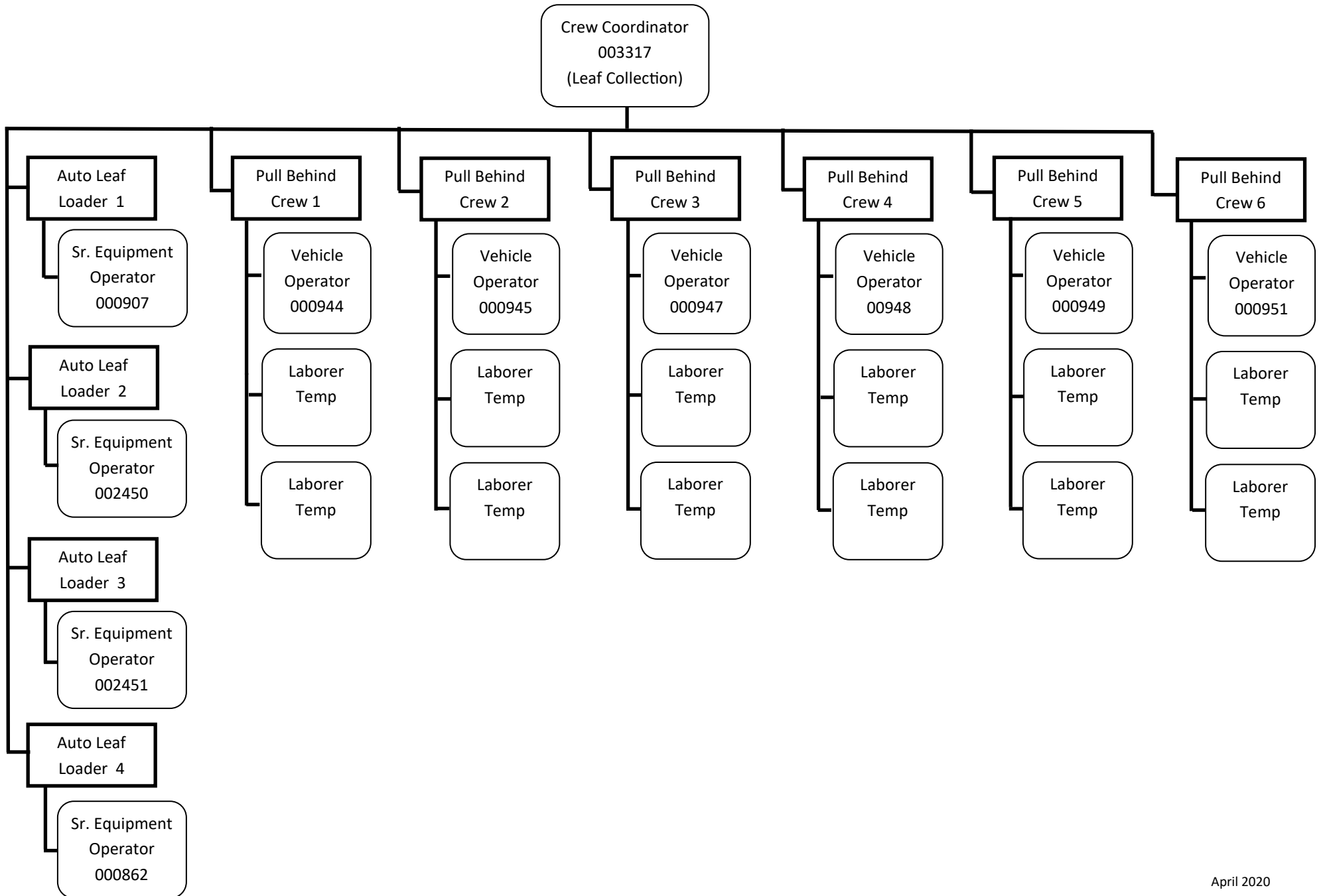


SANITATION - LEAF COLLECTION

SANITATION (12 OF 15) - SEASONAL OPERATIONS - LEAF COLLECTIONS



SANITATION (13 OF 15) - SEASONAL OPERATIONS - LEAF COLLECTIONS



SANITATION (14 OF 15) - SEASONAL OPERATIONS - LEAF COLLECTIONS

