

**PLANNING BOARD REVIEW**

**Child Day Care Center  
in IP Zoning**

**CASE:** PBR 2021-13

**PIN:** 6847-36-4655

**SCALE:** 1" represents 600'

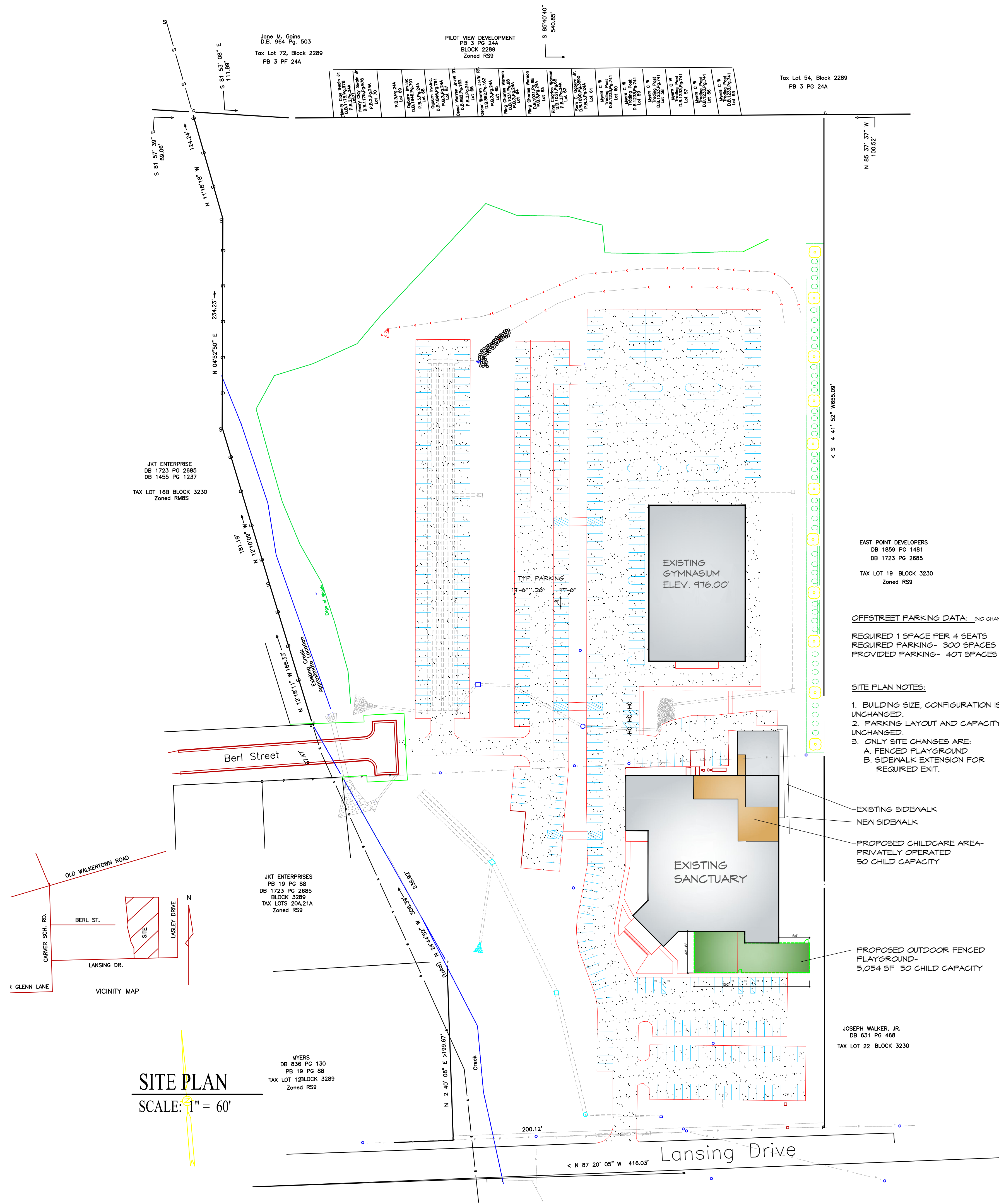
**STAFF:** Reed

**GMA:** 3

**ACRES:** 15.19

**MAP(S):** 6847.01





**SITE PLAN**  
SCALE: 1" = 60'

Revision

**PETERSON / GORDON**

ARCHITECTS  
P.A.

3508-A VEST MILL ROAD  
WINSTON - SALEM NC  
TEL. (336) 760-1411  
EMAIL info@petersongordon.com

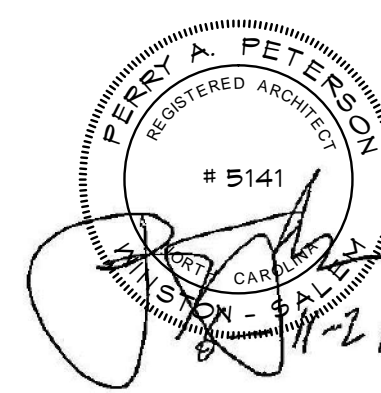
EAST POINT DEVELOPERS  
DB 1859 PG 1481  
DB 1723 PG 2685  
TAX LOT 19 BLOCK 3230  
Zoned RS9

OFFSTREET PARKING DATA: (NO CHANGE)  
REQUIRED 1 SPACE PER 4 SEATS  
REQUIRED PARKING- 300 SPACES  
PROVIDED PARKING- 407 SPACES

- SITE PLAN NOTES:**
- BUILDING SIZE, CONFIGURATION IS UNCHANGED.
  - PARKING LAYOUT AND CAPACITY IS UNCHANGED.
  - ONLY SITE CHANGES ARE:  
A. FENCED PLAYGROUND  
B. SIDEWALK EXTENSION FOR REQUIRED EXIT.

- EXISTING SIDEWALK
- NEW SIDEWALK
- PROPOSED CHILDCARE AREA- PRIVATELY OPERATED 50 CHILD CAPACITY
- PROPOSED OUTDOOR FENCED PLAYGROUND- 5,054 SF 50 CHILD CAPACITY

JOSEPH WALKER, JR.  
DB 631 PG 468  
TAX LOT 22 BLOCK 3230



Greater Life  
Church  
Childcare Alteration  
Winston-Salem, NC

Comm. No.	21-130
Date	6-11-21
Drawn By	PAP

**A1.1**